

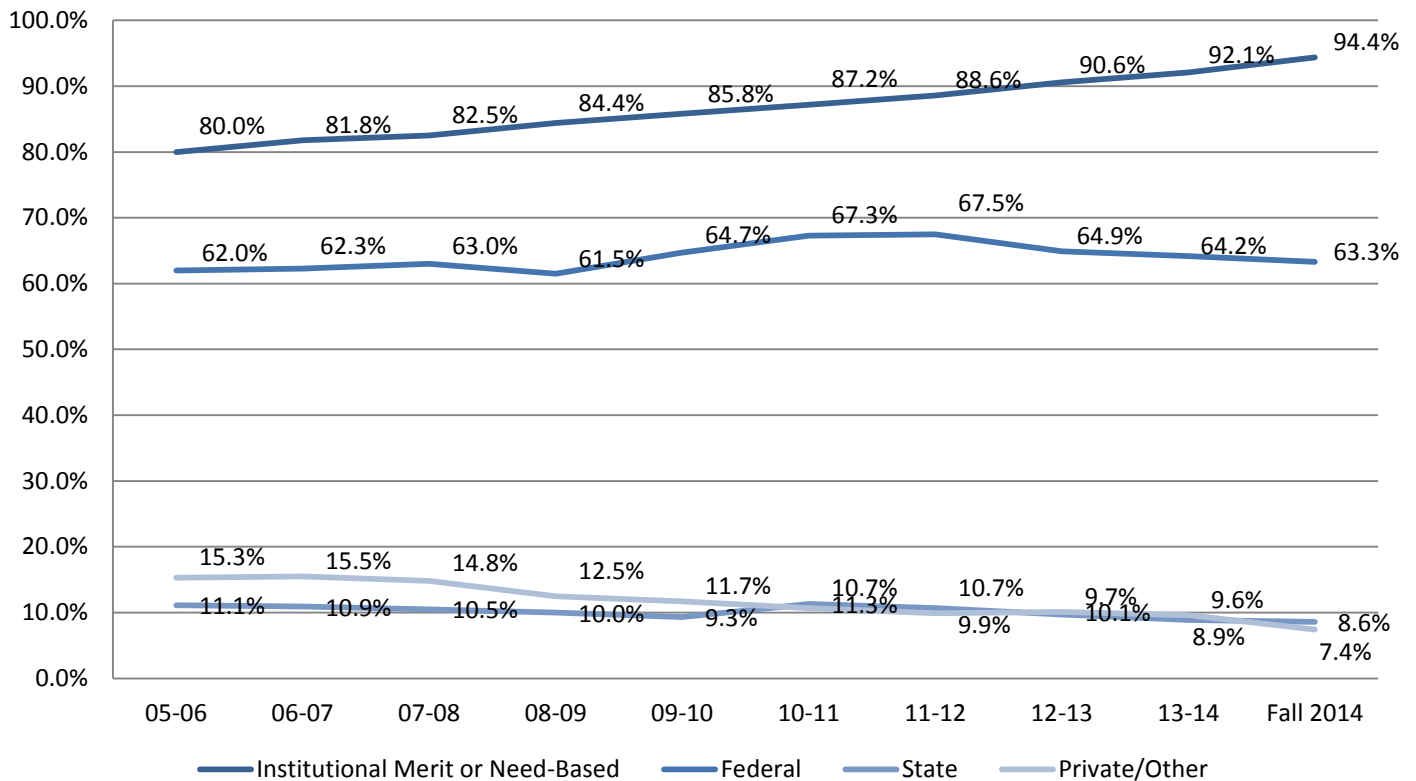
## Percentage of Undergraduates Receiving Aid by Source and Type Ten Academic Years

Percentage of All Undergraduates Receiving Each Aid Type										
	05-06	06-07	07-08	08-09	09-10	10-11	11-12	12-13	13-14	Fall 14*
<b>Institutional Merit or Need-Based Aid</b>	<b>80.0%</b>	<b>81.8%</b>	<b>82.5%</b>	<b>84.4%</b>	<b>85.8%</b>	<b>87.2%</b>	<b>88.6%</b>	<b>90.6%</b>	<b>92.1%</b>	<b>94.4%</b>
Merit Aid	65.0%	67.7%	69.8%	71.7%	72.5%	74.3%	77.4%	82.2%	85.9%	90.6%
Need-Based Aid	47.9%	47.2%	45.3%	44.0%	47.5%	49.2%	48.5%	45.5%	47.3%	48.9%
<b>Institutional Aid (Other)</b>										
Tuition Remission	11.4%	11.3%	10.4%	10.7%	10.9%	10.7%	11.3%	11.1%	11.2%	11.0%
<b>Federal Aid</b>	<b>62.0%</b>	<b>62.3%</b>	<b>63.0%</b>	<b>61.5%</b>	<b>64.7%</b>	<b>67.3%</b>	<b>67.5%</b>	<b>64.9%</b>	<b>64.2%</b>	<b>63.3%</b>
Grant Aid	13.3%	11.3%	13.5%	12.7%	19.4%	24.0%	24.2%	20.6%	20.9%	21.7%
Student Loans	60.5%	61.0%	61.2%	59.7%	61.9%	63.8%	63.8%	61.7%	61.1%	59.6%
Work Study	16.9%	16.4%	18.0%	17.1%	19.3%	21.5%	22.7%	21.0%	19.1%	23.6%
<b>State Aid</b>	<b>11.1%</b>	<b>10.9%</b>	<b>10.5%</b>	<b>10.0%</b>	<b>9.3%</b>	<b>11.3%</b>	<b>10.7%</b>	<b>9.7%</b>	<b>8.9%</b>	<b>8.6%</b>
Grant Aid	11.1%	10.9%	10.5%	10.0%	9.3%	11.3%	10.7%	9.7%	8.9%	8.6%
<b>Private/Other</b>	<b>15.3%</b>	<b>15.5%</b>	<b>14.8%</b>	<b>12.5%</b>	<b>11.7%</b>	<b>10.7%</b>	<b>9.9%</b>	<b>10.1%</b>	<b>9.6%</b>	<b>7.4%</b>
Alternative Loan	15.3%	15.5%	14.8%	12.5%	11.7%	10.7%	9.9%	10.1%	9.6%	7.4%
<b>Aid from Any Source</b>	<b>88.5%</b>	<b>90.8%</b>	<b>91.7%</b>	<b>93.4%</b>	<b>94.8%</b>	<b>95.4%</b>	<b>96.5%</b>	<b>95.7%</b>	<b>97.0%</b>	<b>97.8%</b>

Note: Institutional aid includes aid from restricted funds. Federal aid excludes parent loans. Percentages will not sum as these represent averages of only those who received aid in each category. \*Preliminary estimate based on aid accepted as of September 25, 2014.

Note: Merit aid awarded prior to consideration of need, and thus contributes to meeting need

### Percentage of Undergraduates Receiving Aid by Source



Source: Institutional Research: Banner Extract